

# eXPert

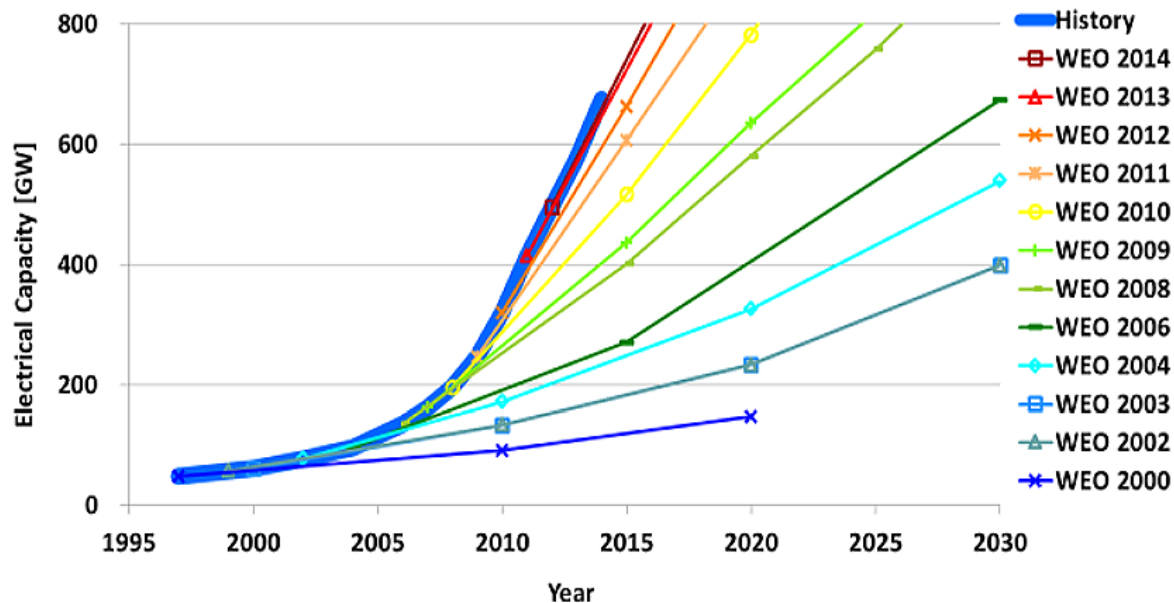
## Green Energy Solutions

Product Overview, 2016





# Renewables market growth scenario

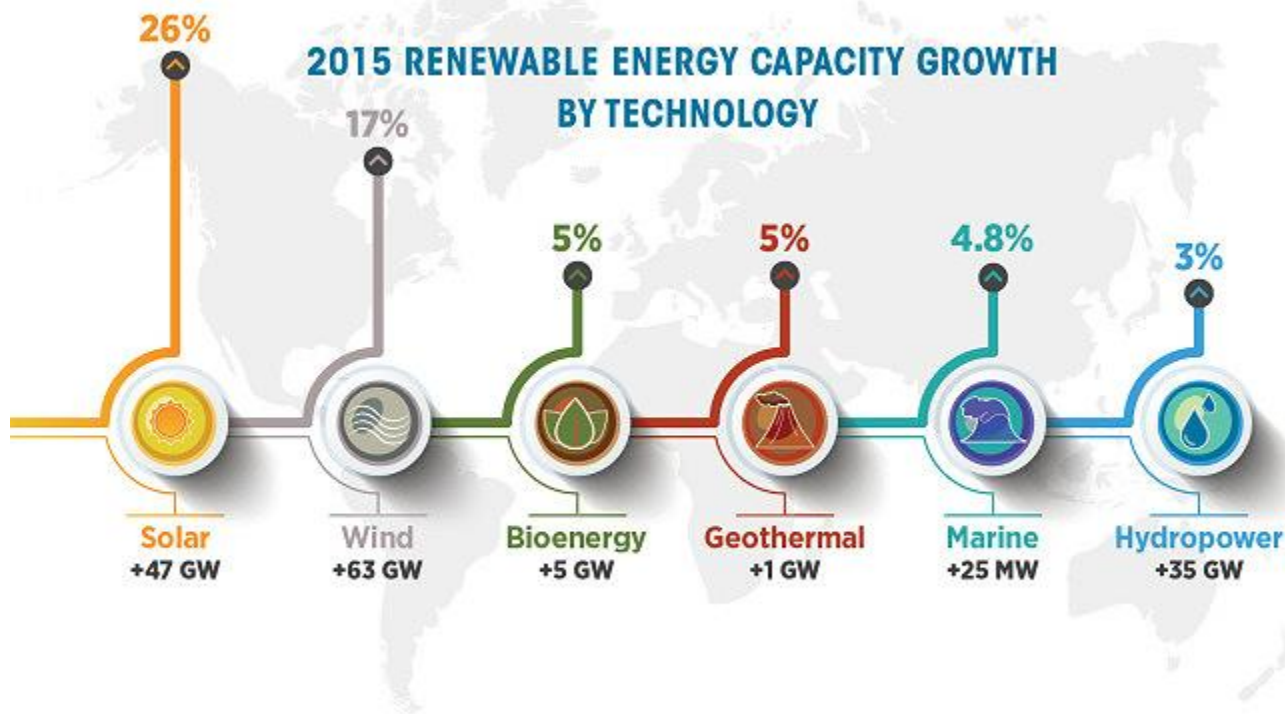


WEO 2015 outlook shows how the real growth trend has surpassed year by year any prevision

- Overall market growth underestimated by experts
- European financial incentives decrement caused by government spending review
- Non-EU countries continue pushing on green energy sector



# Growth by Technology





# Many challenges... even more opportunities

- Tendencies to investment reduction lead our focus on:



## Cost Reduction

- Increase cross-compatibility of control solutions among different plants
- Improve scalability to allow gradual investment
- Reduce maintenance, non-availability and downtimes



## Performance Optimization

- Produce the optimum amount at the right time integrating Energy Storage technology
- Increase control and monitoring features
- Maximize the performance with advanced Real-Time control system



## ROI Maximization

- Increase ROI by rising the production value of the assets
- Reduce OPEX with a smart plant control and monitoring system
- Reduce CAPEX by implementing predictive maintenance



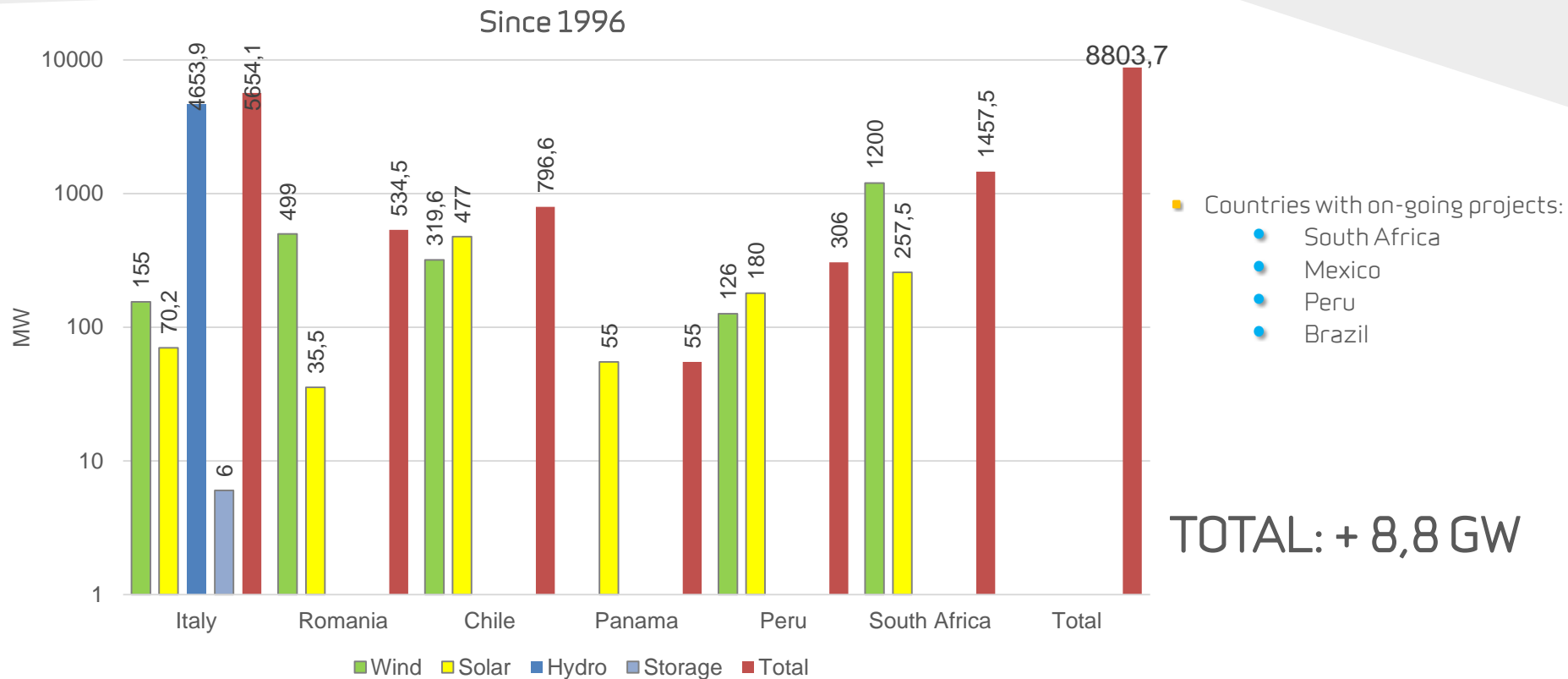
## Our value - Ahead on Renewables way

Why Sdi?

- **Flexibility & Integration at first place**: we can provide standard solutions with high level of customizability that meet every control, monitoring and remote control needs
- **Field-proven reliability**: our solutions count hundreds of applications in energy field and other high critical systems, with more than 8,8 GW of Green Energy installed capacity in the last 10 years
- **Our commitment in development**: we invest everyday in improving our solutions, thus creating a strong relationship with the customer
- **Valuable data, everywhere**: we can provide the information you need on every device, anytime



# Green Energy capacity managed per Country



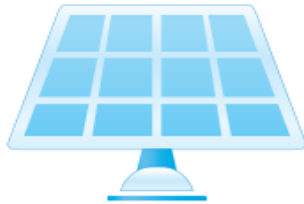


# eXPert Green Energy Solutions

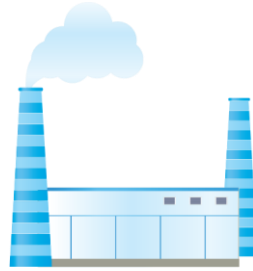
- The latest evolution of our **eXPert integrated SCADA/HMI platform** designed specifically for control, monitoring and remote control of renewable plants



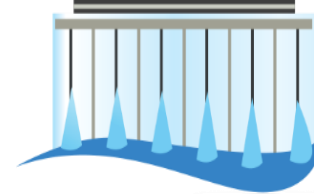
Wind



Solar



Geothermal



Hydro



Storage



## ... also in Energy Storage systems

- Overcome the unpredictability of Wind and Solar generation with Energy Storage technology management
  - Interface between EMS (Energy Management Systems), SCADA system, Networking and Security systems
  - Increase Smart Grids application feasibility
  - **Control & Telecontrol:**
    - Local & remote set point regulation
    - Storage system intervention strategies
  - **Supervision:**
    - Data collecting & display from plant and storage system
    - Weather and production forecasts







# Main Features

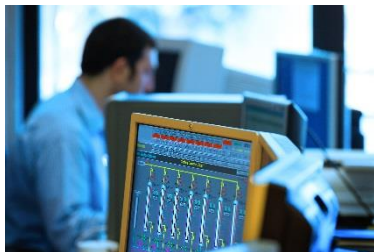
■ With eXPert Green Energy Solutions you can:

- **Be Flexible:** you can adapt the configuration to every pre-existent technology. Most widely adopted communication protocols are supported
- **Be Integrated:** completely integrated SCADA/HMI solution to interface every level of the plant, from field to ERP
- **Be Reliable:** native redundancy management allows uninterrupted level of service
- **Be Portable:** eXPert GES Dashboard can be accessed via Web Server on Desktop PC, Smartphone and Tablets. Standard web browsers are supported

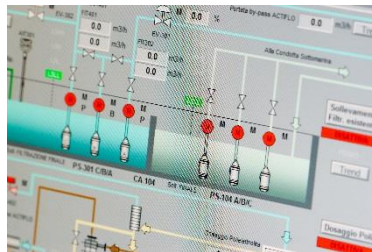


# A lot of needs. One solution

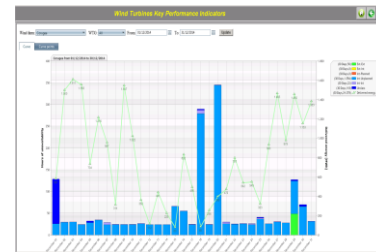
- eXPert Green Energy Solutions can assist you with:



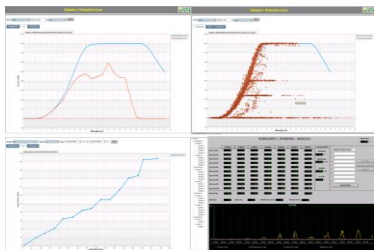
Real-Time Process Control & Automation



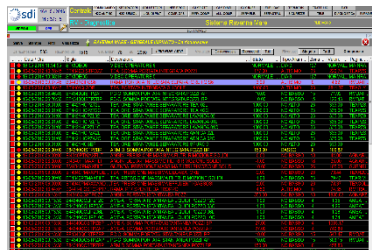
High Performance HMI features



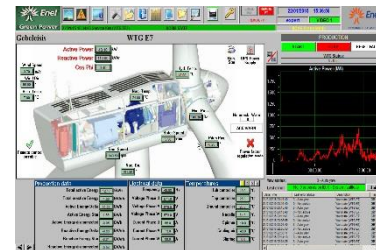
Smart Data Analytics & Custom KPI



Configurable Reports and Trends



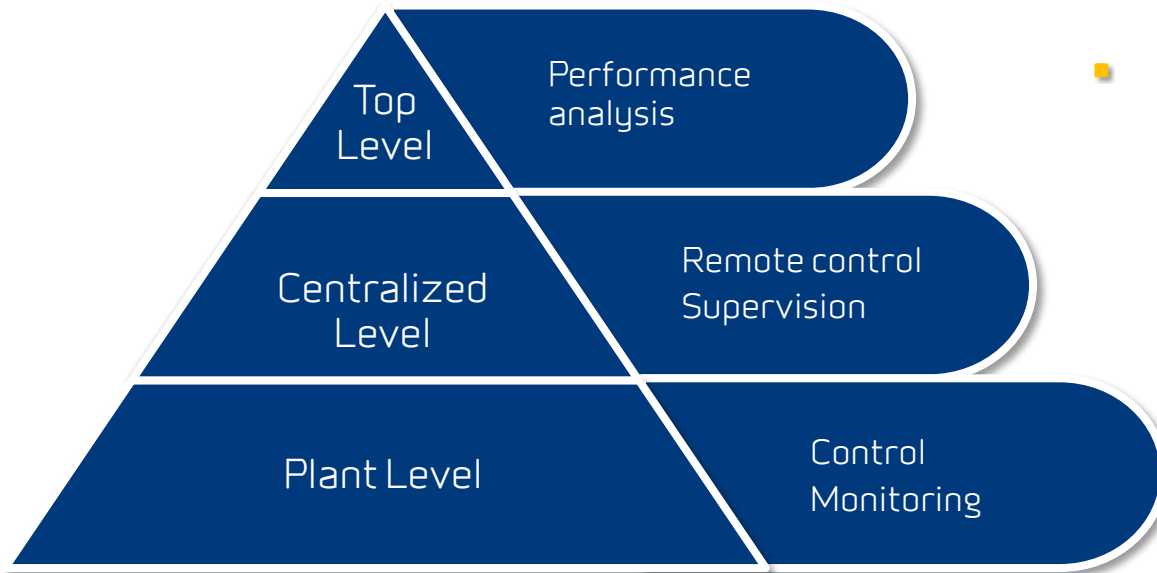
Effective Alarm Management



Asset Management



# Advanced Integration



- eXPert GES Studio
- eXPert GES Remote Control Room
- eXPert GES Plant SCADA / HMI



### ■ Plant Level SCADA / HMI solution key features:

#### Run Time

- I/O management
- Redundancy management
- Connectivity
- Soft PLC functions
- Remote alarming management
- IEC 61131-3 automation logics execution
- Main supported protocols:
  - MODBUS
  - IEC 60870-5-101
  - IEC 60870-5-104
  - IEC 60870-5-103
  - IEC 61850, MMS-UCA2
  - OPC / OPC UA
  - DNP3.0

#### Data Management

- Historian features
- ETL function
- RDBMS management (Oracle native integration)
- Custom report & trend
- Disaster Recovery

#### Engineering Station

- Automation logics design
- HMI graphic configuration
- Trend & report configuration
- Object configuration
- Layout configuration
- Redundancy configuration management
- Active Directory integration
- Network, I/O tags, plant configuration

#### HMI

- High performance graphic design
- Alarm management
- Video wall support
- Multiple graphic layouts available
- Calculated KPI display
- Active Directory integration
- Network, I/O tags, plant configuration
- Web interface

Sdi is a certified Oracle Gold Partner:





- Centralized Level SCADA / Control Room solution key features:

### Remote Control

- Centralized control of local Plant SCADA systems
- Remote I/O devices management
- Remote RTU control and monitoring features
- Global production output control

### Control Room

- Complete control room supply, from operator workspace to process overview video walls
- Advanced supervision features
- Alarm display and reclassification
- Global and plant-specific reports & trends display

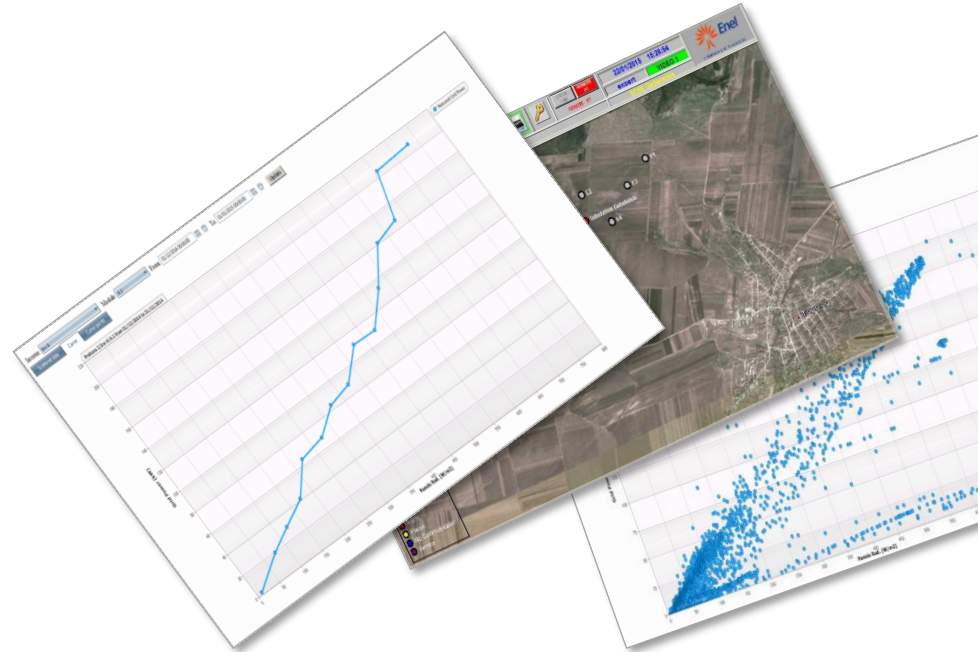
### HMI

- High performance graphic design
- Alarm monitoring
- Video wall support
- Multiple graphic layouts available
- Calculated KPI display
- Active Directory integration
- Remote plant objects configuration
- Web interface



### ■ Performance analysis solution key features:

- Live data analytics
- Asset management
- User settable trends and reports
- Predictive maintenance
- Alarm analysis
- Big Data management





### eXPert STAR DualBus Controller

#### Key points



- **Native Redundancy** : highest level of reliability for CPU, I/O boards and power supply
- **Communication** : from field acquisition to control nodes
- **Management** : field commands, set points, control loops, SOE...
- **Execution** : programmable logics, control blocks and regulation functions
- **Customization** : expandability granted with the optional boards for additional I/O, power supply, communication, PRP/HSR
- **PPC and TSO interface functions** : the controller acts as Power Plant Controller and direct interface with Transmission System Operators



### microSTAR compact RTU

#### Key points

- **Stand alone** : compact field data acquisition solution, supplied fully assembled and pre-configured for the integration with the main system
- **Data acquisition** : gathering data from field devices such as instruments, meteo stations etc.
- **Communication** : data transfer to main system via IEC 60870.5.101 - 104 protocol





# Thank you for your attention

eXPert Green Energy Solutions