



# Sdi S.p.A.

## Company Profile

*Aug-2022*



## Summary

- Sdi S.p.A.
- Quality, Safety and Environment
- Products and turn-key systems
- Solutions
- Services
- Research & Development
- Our customers



- Sdi in brief
- Highlights
- Mission
- Offices and laboratories
- Economic data
- Organization
- Our resources
- Never ending growth
- Sdi worldwide
- Why Sdi?

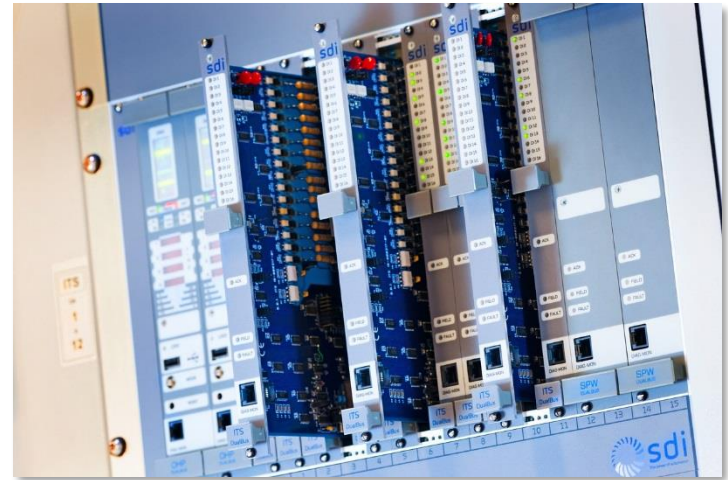


- A short presentation about who we are and what we can do





- Since 1973 is the main Italian company in the field of automation, supervision, control and remote control of highly critical industrial plants
- Sdi develops, builds and supplies complete DCS, SCADA systems and special application equipments to main Italian players like Eni, SNAM and ENEL Green Power
- More than 40 years of experience grant the know-how for continue innovation and evolution of Sdi's offer





- We aim to provide a reliable and technologically advanced answer to every **automation** need, coming first on **innovation** path thanks to our **eXPert™** platform.

Win your next big challenge with eXPert™





## Headquarters - Trezzano s/N (Milano)

(3500 m2 area – Offices and laboratories for both Hw and Sw development)

- Management, commercial, marketing and accounting offices
- Hardware and Software laboratories, R&D
- Systems pre-building and testing

## Production Unit - Trezzano s/N (Milano)

(600 m2 area)

- Warehouse, after sales and maintenance services

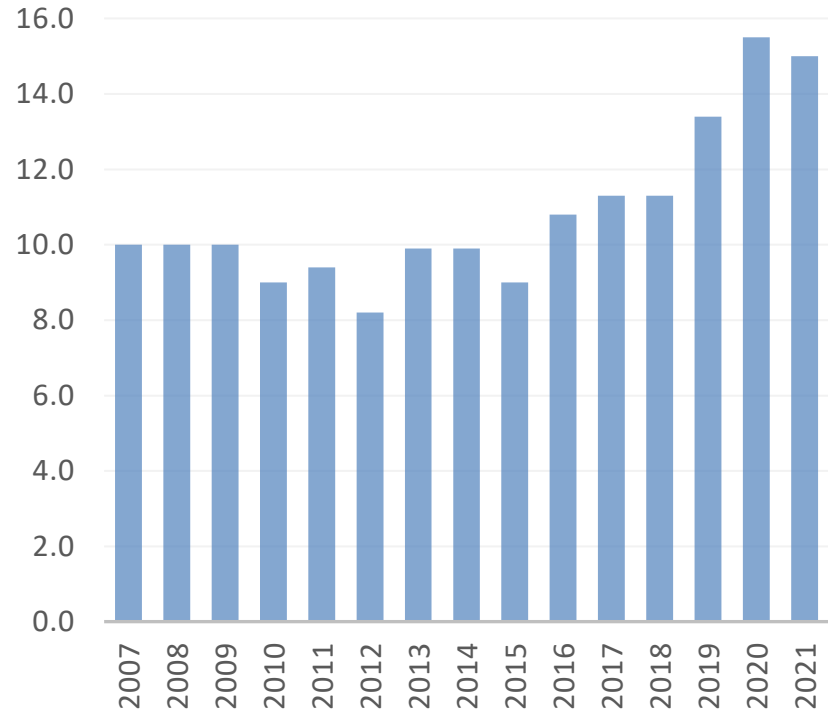
## Branch Office - Pisa

- R&D office
- Software development, after sales services

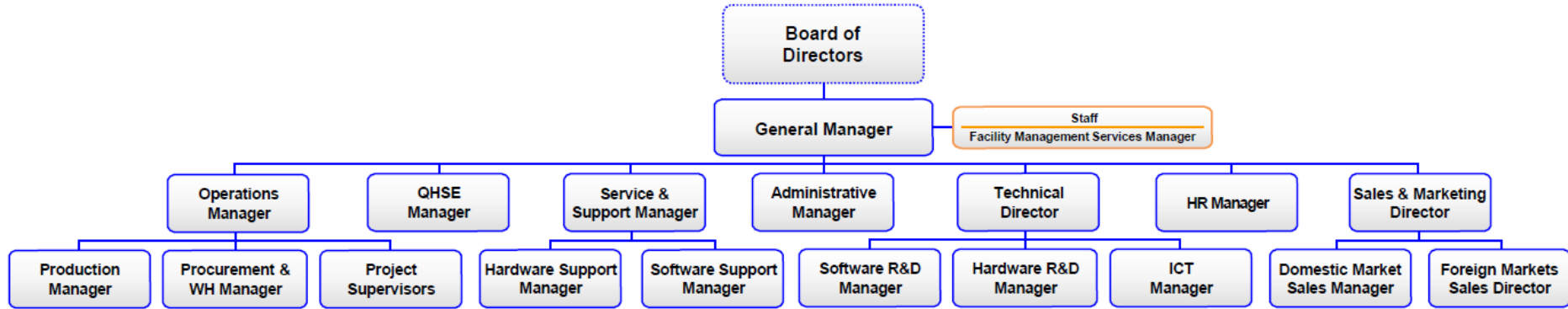




- Sdi is an independent entity. The paid up capital of € 400.000,00 is completely held by company management
- Average turnover of 14,6 Mln€, increasing in the last 3 years.



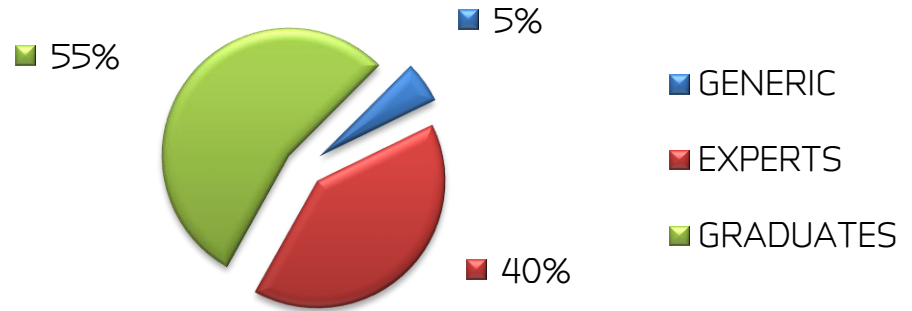




Rev. 10 of 12.06.2019



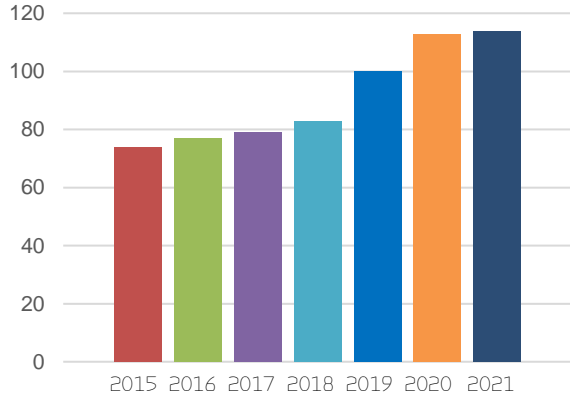
- 114 employees and partners (17 % women)
- Average employees age: 41
- Average working seniority: 17
- All staff employed with permanent contract
- Staff turnover tending to zero



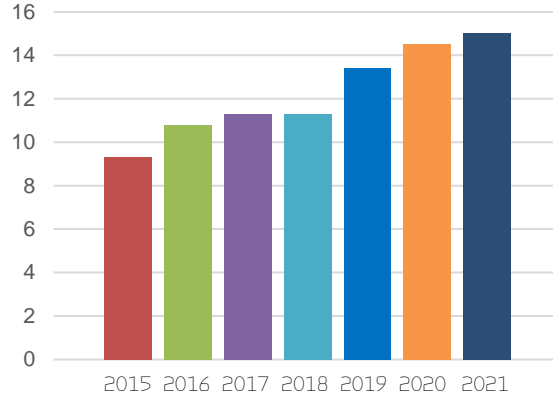


- Increase of staff numbers
- Growth and consolidation of turnover in the last yers
- Growth and consolidation in sales volume of eXPert products licenses directly supplied to end customers and/or integrators

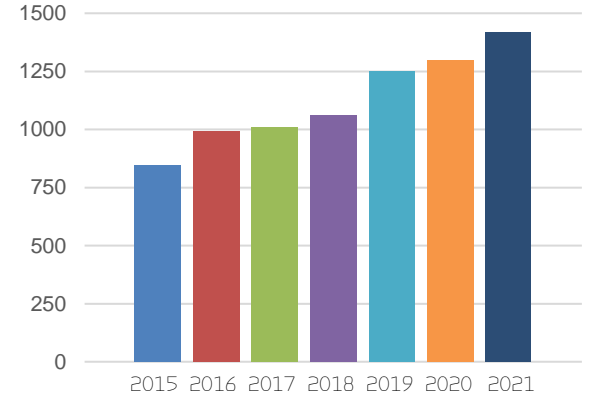
Staff growth (Unit)



Turnover increase (Mln€)

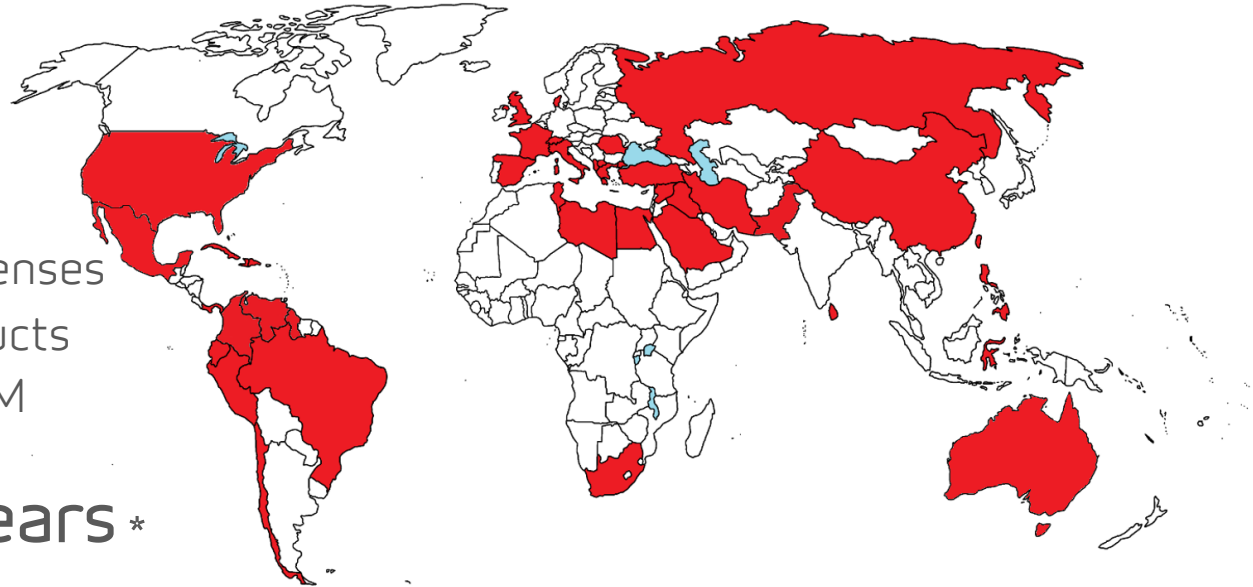


Licenses sales (Unit)





More than **14.000** licenses  
of the *eXPert* range products  
sold directly or via our OEM  
partners and VARs in the  
**last 16 years** \*



\* = sales data for years 2006-2021



## Our value – ahead on Automation path

## Why Sdi?

- Flexibility & Integration at first place: we can provide a completely custom solution that meets every control, monitoring and remote control needs
- Field-proven reliability: hundreds of applications in the field of oil & gas, power production and distribution, public utilities, water, renewables, transport...
- Our commitment in development: we invest everyday in improving our solutions, thus creating a strong relationship with the customer
- Valuable data, everywhere: we can provide the information you need on every device, anytime



# Quality, Safety and Environment

- Certifications
- Research Laboratory
- Metrological Qualifications



- The management systems of Sdi S.p.A. certified by *DNV GL Business*



Quality - UNI EN ISO 9001



Environment - UNI EN  
ISO 14001



Information Security -  
ISO/IEC 27001



Health and Safety in the  
Workplace - ISO 45001



- Sdi's Research Laboratory is qualified to complete subsidized research projects aimed to technologic innovation of third parties systems and solutions
- REGISTER OF APPROVED RESEARCH LABORATORIES of the Italian Ministry of Education, University and Research, art.14 Law 297/99



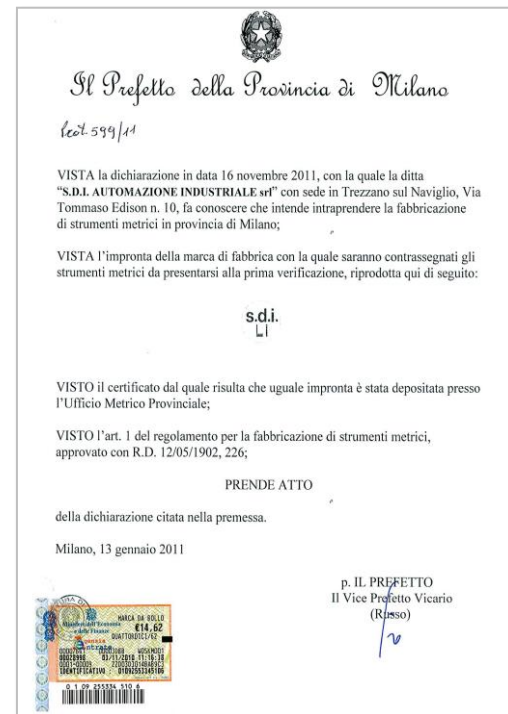
*Ministero dell'Istruzione, dell'Università e della Ricerca*





- Certified in accordance to Italian regulations in force
- Certification Body: PREFETTO PROVINCIA DI MILANO

*"Legal Metrology Competent Body accredited by C.C.I.A.A. (Chamber of Commerce) and by the Prefecture of Milan"*





## Products and turn-key systems

- Overview
- Distributed control systems (DCS)
- Remote control systems (SCADA, RTU)
- Simulation and Leak Detection Systems
- Metering skids
- Sdi and Industry 4.0



**eXPert™ SCADA**  
Remote control



**eXPert™ DCS**  
Distributed control



**eXPert™ STAR**  
RTU and controllers



**eXPert™ LDS**  
Simulation and  
Lead Detection



**eXPert™ EMMS**  
Metering and  
Custody Transfer



- Highly integrated SCADA platform composed by:
  - Software modules of the central system – eXPert™ SCADA
  - Field devices (RTU) – eXPert™ STAR range
- Disaster Recovery systems
- Hot-backup redundancy natively integrated in each module of the SCADA platform



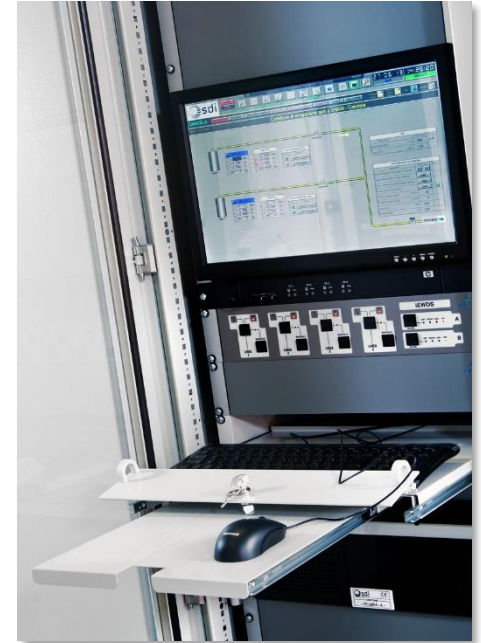


- Over 1.000.000 tags database, featuring multi-level hierarchical structure suitable for geographically distributed systems
- Redundant or single field device communications (GSM, LAN, WAN, wired and wireless)
- Standard communication protocols, certified in accordance with IEC 870.5.101/104, MODBUS, DNP3, etc
- Proprietary protocols management to ensure the complete integration with third parties RTU





- SCADA server in redundant or single configuration
- Flexible operator stations (HMI) and videowall support
- Engineering workstations
- Historical data storage stations
- Field devices interface modules
- External systems interface modules
- Hardwired and wireless communication manager
- Disaster Recovery architecture manager
- Cyber Security management in accordance to IEC 62351 regulation



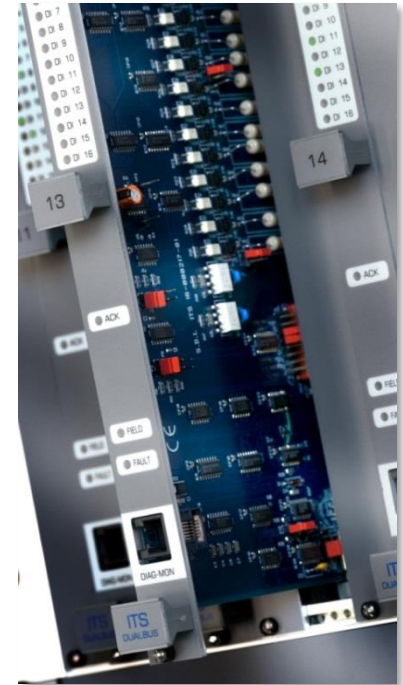


- Modular or single-board (RTU) remote control peripherals
- SIL 3 Safety SCADA software (developed in accordance with the "V-model" contained in IEC 61508 standard)
- Safety remote control peripherals (SIL 3 certified RTUs)
- Smart I/O interfaces
- Field bus interfaces
- Sequence of Events RCE/SOE recorders
- Asset Management module
- Optimization modules





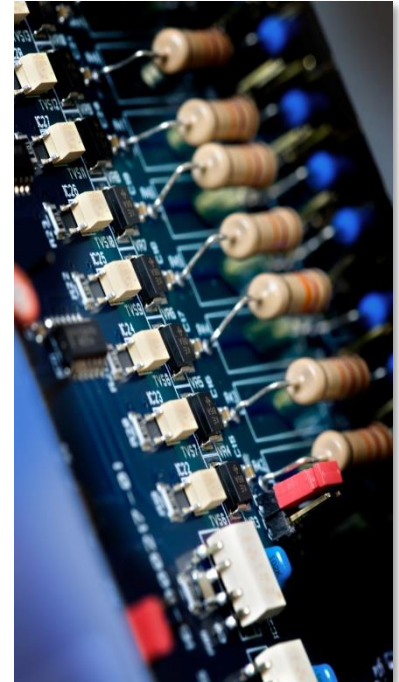
- Modular architecture
- Highest reliability and safety levels
  - Hot-Backup redundancy management
  - Hot Insertion Boards (HIB)
  - Diagnostics
  - Safety Integrated Systems (SIL 3) according to IEC 61508 e IEC 61511 standards
  - Cyber Security management in accordance to IEC 62351 regulation







- Alarm Management and Operator Audit Trails from HMI stations and control room videowalls
- LAN / WAN connectivity for field acquisition and remote control centers
- Data interchange with ERP systems granted by relational database management
- Scalability and flexibility of system architecture
  - Over 2048 control nodes
  - Over 1 Million of physical I/O tags



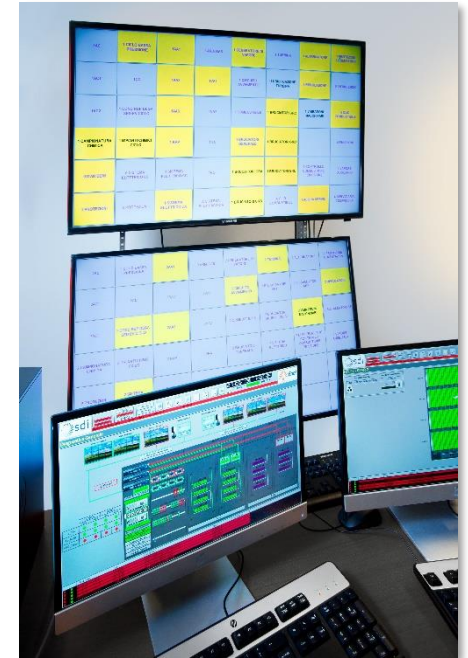


- Modular control nodes
- eXPert™ STAR range programmable controllers
- Smart I/O interfaces
- Fieldbus interfaces
- Smart communication interfaces
- Loop controllers
- F&G - ESD – PSD modules (SIL 3)



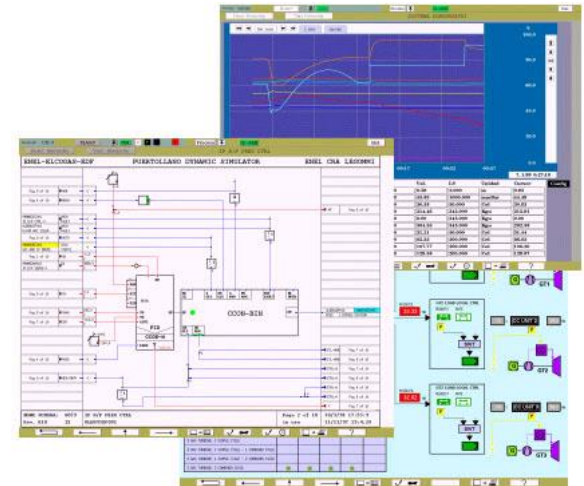


- Sequence of Events recorders RCE/SOE
- Flexible operator interfaces (HMI) and videowall support
- Engineering workstation
- Historical data storage stations
- Asset Management
- Plant optimization and advanced control modules





- eXPert LDS real-time Leak Detection System based on accurate simulation models derived by SCADA provided data – eXPert™ LDS
- Complete integration between real-time SCADA functions and simulation functions
- Specific packages for interactive simulators:
  - Plant design
  - Predictive and corrective maintenance
  - Operator training
  - Process performance optimization





- Complete technical and fiscal metering systems – eXPert™ EMMS
- Support for volumetric, venturimetric and ultrasonic measurement principles
- Metrological certified body
- Interface with EMS (Energy Management System)
  - Data acquisition
  - Enterprise systems data interchange
  - Analysis and accounting





- Sdi's eXPert technology is ready for Industry 4.0 thanks to its advanced enabling features



High performance HMI



Remote devices wireless connection



Mobile device interface



Cyber Security management



Real-Time data analytics



Big Data management

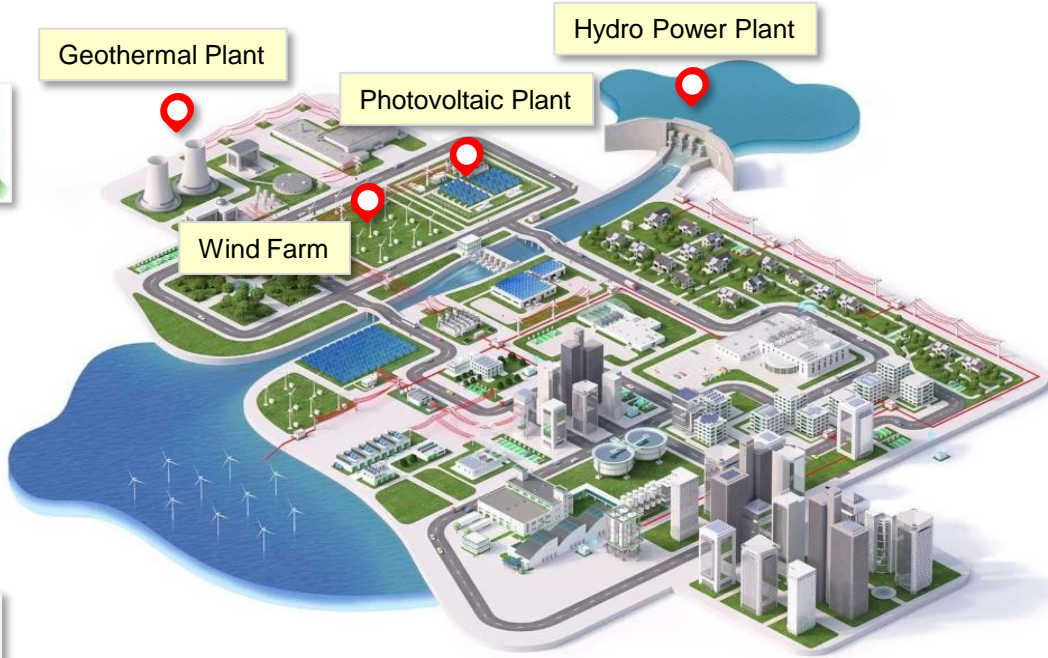


**eXPert**<sup>TM</sup>  
is Industry 4.0 ready

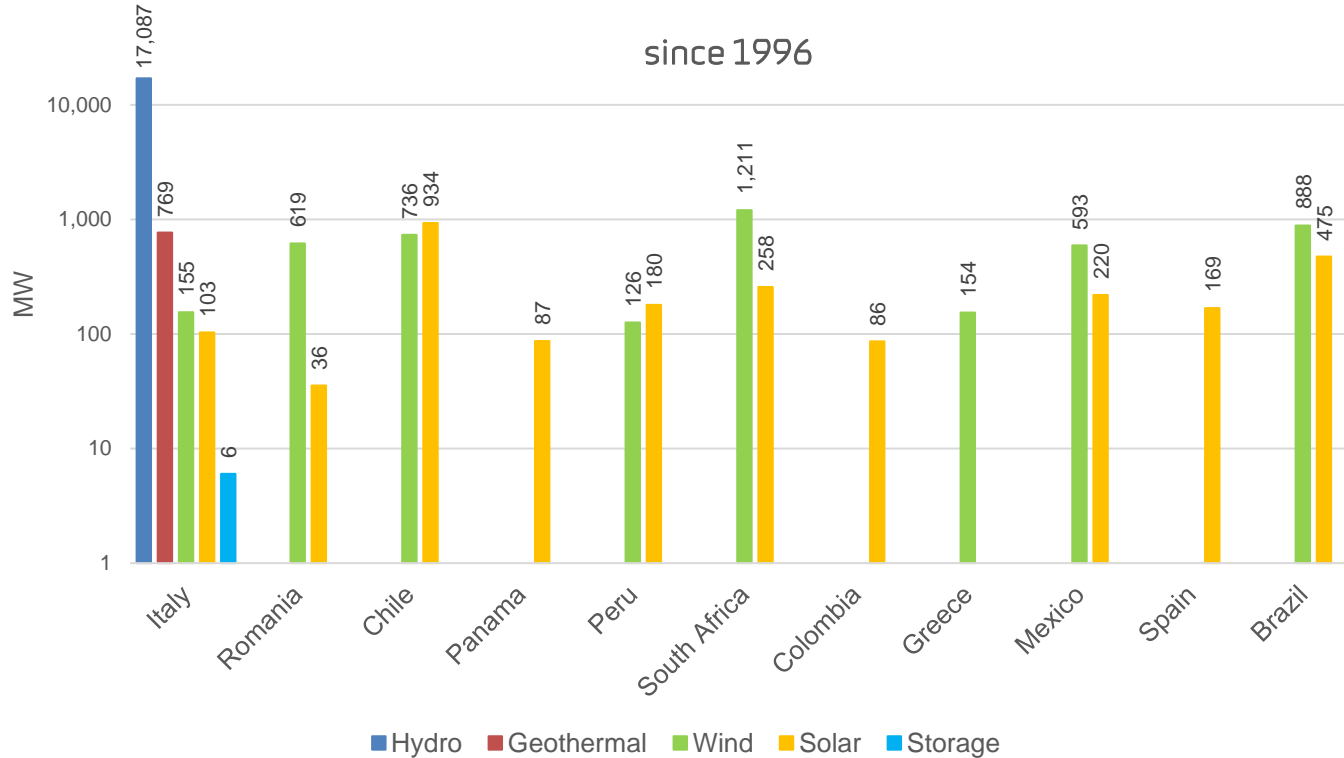




- Green Energy
- Gas
- Power
- Public Utilities
- TSO
- DSOs



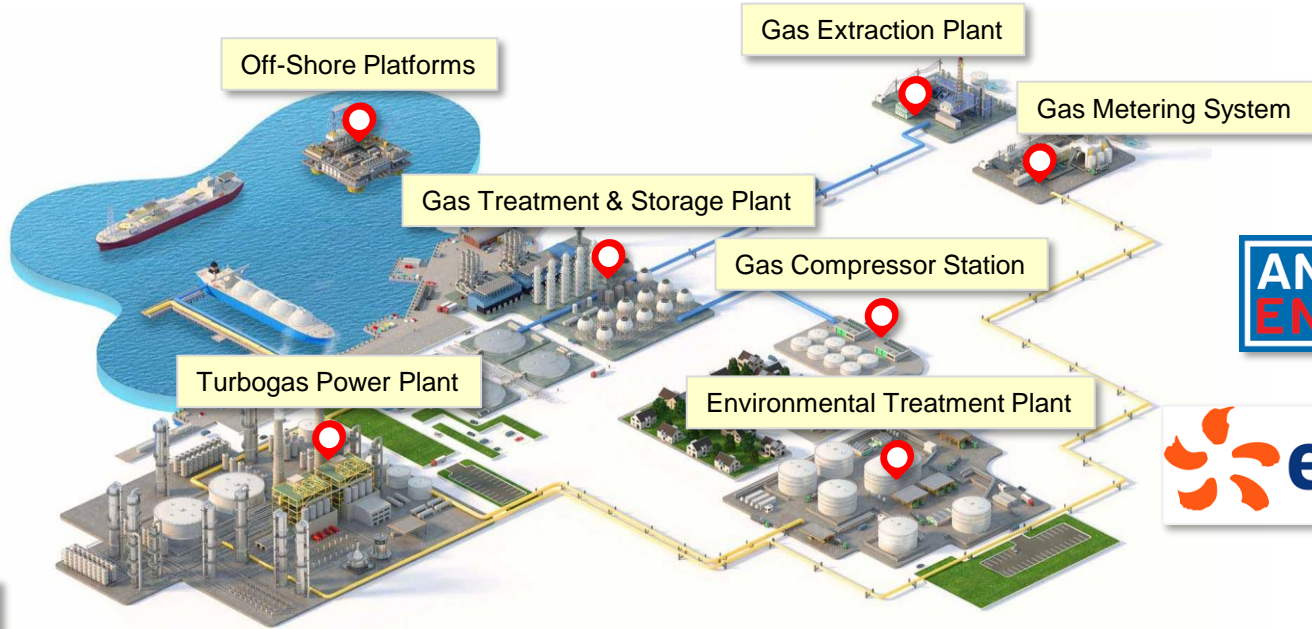


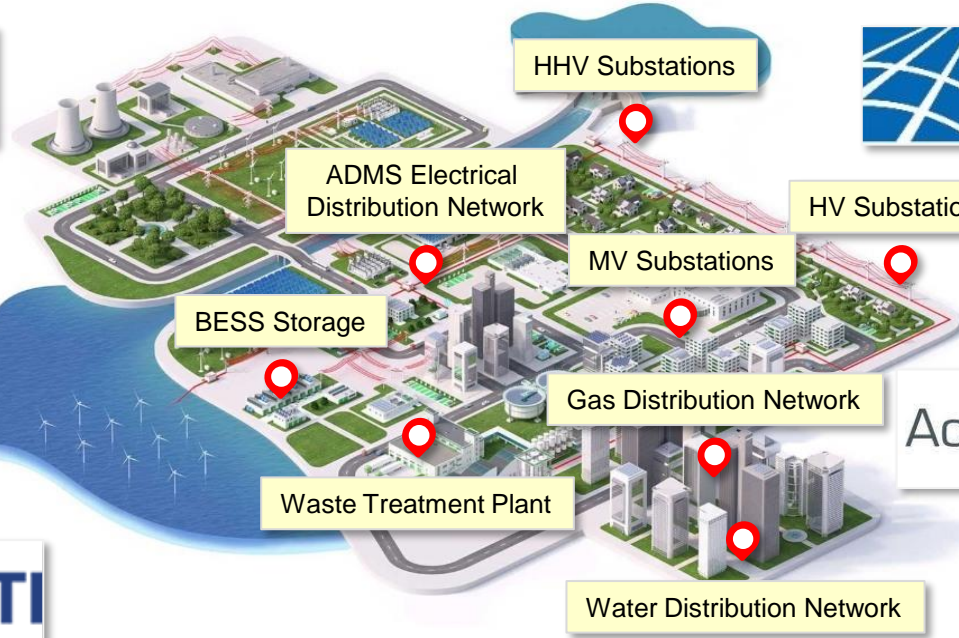


Managed power per type:

- Hydro: 17 GW
- Wind: 4,5 GW
- Solar: 2,5 GW
- Geothermal: 1 GW
- Storage: 6 MW

Total: 25 GW



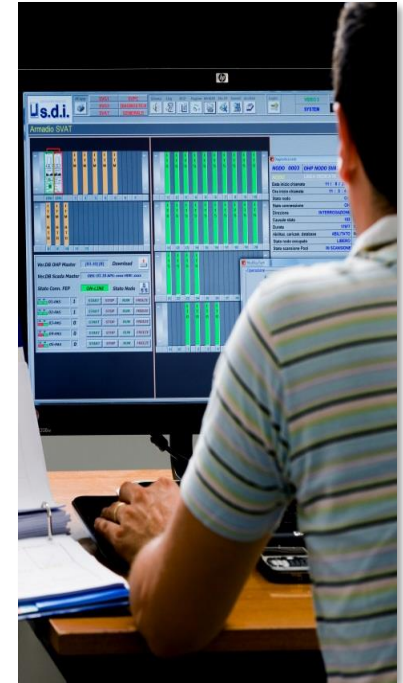
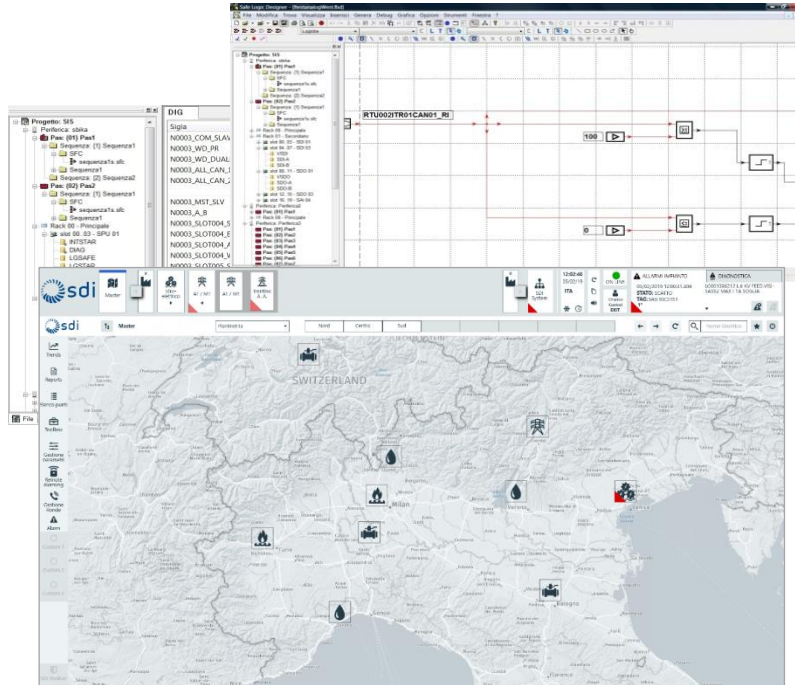




- Complete systems design and supply
- Engineering
- Functional integration of third parties devices
- Commissioning
- On-site maintenance
- Remote assistance and h24/365dd stand-by
- Courses for maintenance and system operators



- Engineering
- Integration
- Building
- Configuration
- Installation
- Testing
- Commissioning
- Maintenance





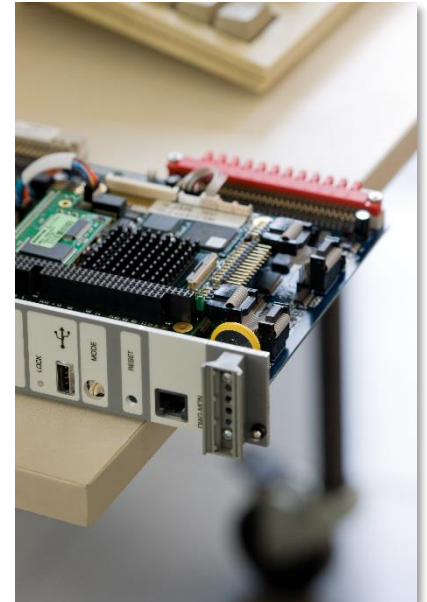


## Research and Development

- Product management
- Custom applications design and development
- Software development
- Hardware development
- Public and private founded research projects



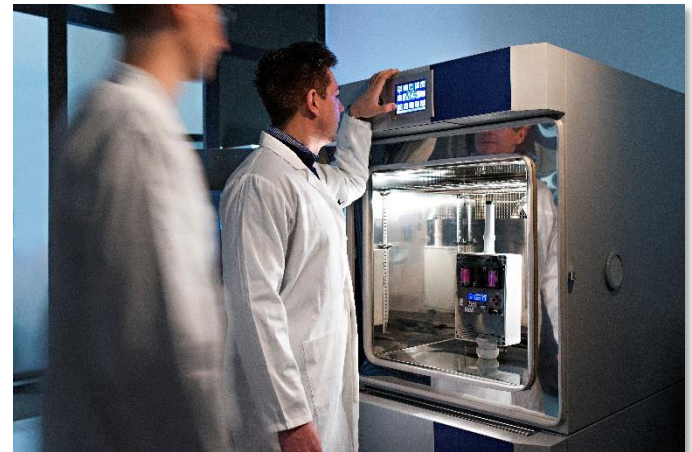
- Analysis of technological progresses and enhancements introduced in new hardware and software platforms applied to industrial applications
- Constant interaction with customers and experience learning in over 40 years of systems implementation
- Identification of new possible features in order to make the systems more and more performing while adhering to operational needs
- Participation in innovative projects, carried out in collaboration with leading universities and research institutes







- Design and development of engineering software applications
- Design and development of custom hardware devices for automation field
- Custom development based on functional or detail customer specifications
- Support for development of solutions that require certification from third party body





## Our customers

- Direct customers
- VAR partners and integrators



## Our customers

Some of our customers



Gruppo ENI



Gruppo SNAM  
Rete Gas





# Thank you for your attention

Company Profile